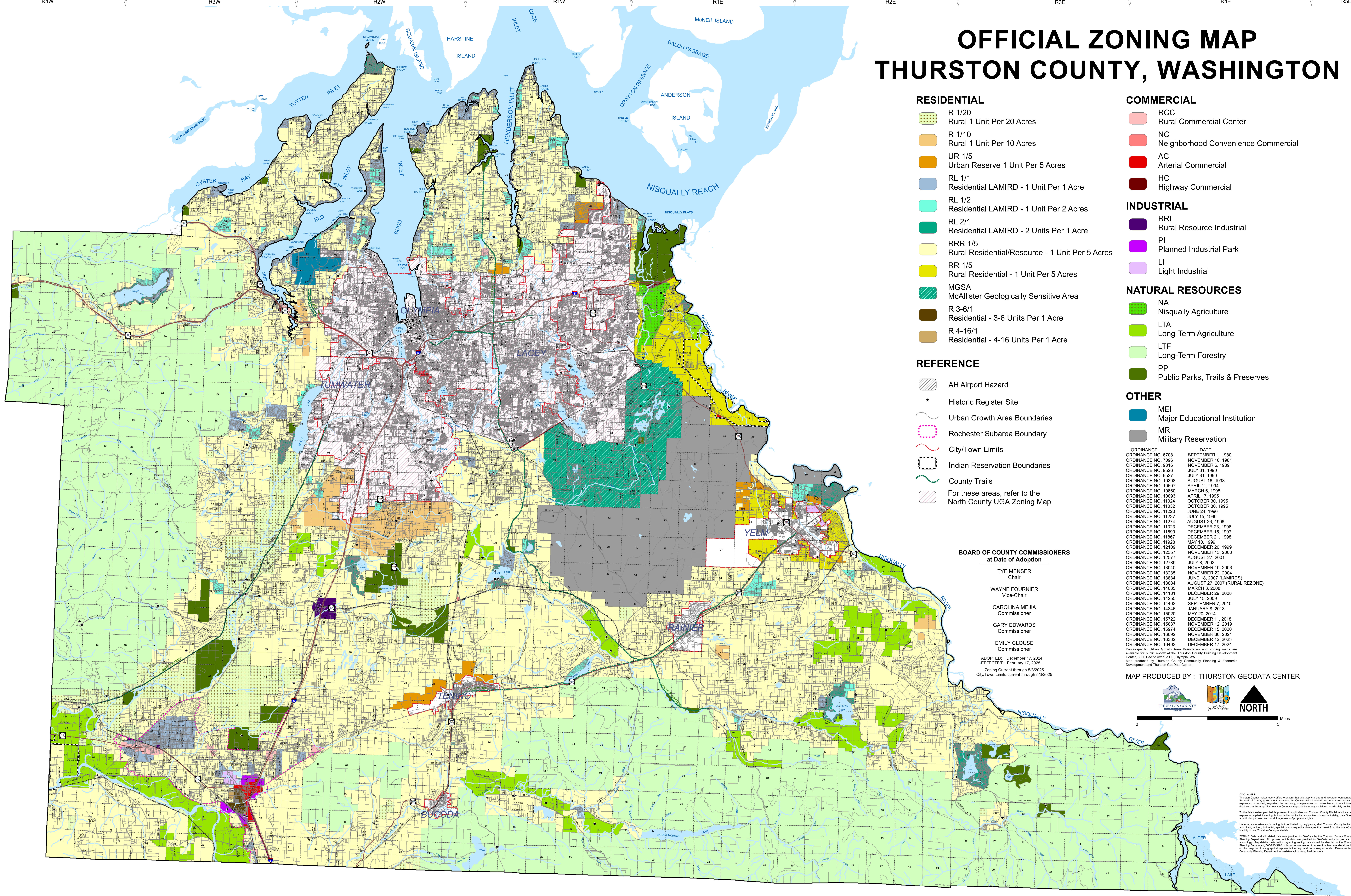


OFFICIAL ZONING MAP THURSTON COUNTY, WASHINGTON



RESIDENTIAL

- R 1/20
Rural 1 Unit Per 20 Acres
- R 1/10
Rural 1 Unit Per 10 Acres
- UR 1/5
Urban Reserve 1 Unit Per 5 Acres
- RL 1/1
Residential LAMIRD - 1 Unit Per 1 Acre
- RL 1/2
Residential LAMIRD - 1 Unit Per 2 Acres
- RL 2/1
Residential LAMIRD - 2 Units Per 1 Acre
- RRR 1/5
Rural Residential/Resource - 1 Unit Per 5 Acres
- RR 1/5
Rural Residential - 1 Unit Per 5 Acres
- MGSA
McAllister Geologically Sensitive Area
- R 3-6/1
Residential - 3-6 Units Per 1 Acre
- R 4-16/1
Residential - 4-16 Units Per 1 Acre

REFERENCE

- AH Airport Hazard
- Historic Register Site
- Urban Growth Area Boundaries
- Rochester Subarea Boundary
- City/Town Limits
- Indian Reservation Boundaries
- County Trails
- For these areas, refer to the North County UGA Zoning Map

COMMERCIAL

- RCC
Rural Commercial Center
- NC
Neighborhood Convenience Commercial
- AC
Arterial Commercial
- HC
Highway Commercial

INDUSTRIAL

- RRI
Rural Resource Industrial
- PI
Planned Industrial Park
- LI
Light Industrial

NATURAL RESOURCES

- NA
Nisqually Agriculture
- LTA
Long-Term Agriculture
- LTF
Long-Term Forestry
- PP
Public Parks, Trails & Preserves

OTHER

- MEI
Major Educational Institution
- MR
Military Reservation

BOARD OF COUNTY COMMISSIONERS at Date of Adoption

- | | |
|--------------------------------|--------------------------------|
| TYE MENSER
Chair | NOVEMBER 10, 1981 |
| WAYNE FOURNIER
Vice-Chair | NOVEMBER 6, 1989 |
| CAROLINA MEJIA
Commissioner | JULY 31, 1990 |
| GARY EDWARDS
Commissioner | JULY 31, 1990 |
| EMILY CLOUSE
Commissioner | AUGUST 16, 1993 |
| | APRIL 11, 1994 |
| | MARCH 6, 1995 |
| | APRIL 17, 1995 |
| | OCTOBER 30, 1995 |
| | JUNE 24, 1996 |
| | JULY 15, 1996 |
| | AUGUST 26, 1996 |
| | DECEMBER 23, 1996 |
| | DECEMBER 15, 1997 |
| | DECEMBER 21, 1998 |
| | MAY 10, 1999 |
| | DECEMBER 20, 1999 |
| | NOVEMBER 13, 2000 |
| | AUGUST 27, 2001 |
| | JULY 8, 2002 |
| | NOVEMBER 10, 2003 |
| | NOVEMBER 22, 2004 |
| | JUNE 18, 2007 (LAMIRDS) |
| | AUGUST 27, 2007 (RURAL REZONE) |
| | MARCH 9, 2008 |
| | DECEMBER 29, 2008 |
| | JULY 15, 2009 |
| | SEPTEMBER 7, 2010 |
| | JANUARY 8, 2013 |
| | MAY 20, 2014 |
| | DECEMBER 11, 2018 |
| | NOVEMBER 12, 2019 |
| | DECEMBER 15, 2020 |
| | NOVEMBER 30, 2021 |
| | DECEMBER 12, 2023 |
| | DECEMBER 17, 2024 |

ADOPTED: December 17, 2024
EFFECTIVE: February 17, 2025
Zoning Current through 5/3/2025
City/Town Limits current through 5/3/2025

MAP PRODUCED BY : THURSTON GEODATA CENTER



DISCLAIMER:
Thurston County makes every effort to ensure that this map is a true and accurate representation of the data provided. However, the County and all related personnel make no warranty, expressed or implied, regarding the accuracy, completeness or correctness of any information shown on this map. No responsibility is assumed for any decisions based solely on the map.
To the fullest extent permitted by law, Thurston County disclaims all warranties, express or implied, including but not limited to, negligence. Users of this map are advised to verify the accuracy of any information shown on this map before relying on it for any purpose.
ZONING Data and all related data was provided to Geodata by the Thurston County Community Planning Department. All updates to the data are provided to Geodata and changes are made accordingly. An updated inventory map showing zoning data should be provided to the Community Planning Department for assistance in making final decisions.