

Top NEW features in ARES® Commander 2017

Your competitive advantage for CAD

1



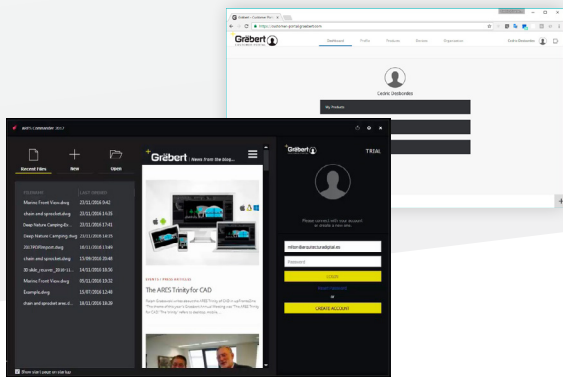
New “Trinity” Dark User Interface

The new Dark UI is harmonizing the user interface across all the ARES CAD software and introducing new features

The new Dark UI contributes to Graebert’s unique “Trinity” concept offering a seamless user experience across desktop, mobile and cloud. Besides the fresh and modern look and feel, you will enjoy enhancements such as auto-hiding palettes, command line completion, history for undo-redo and a welcome screen.

>> See the video on our website

2



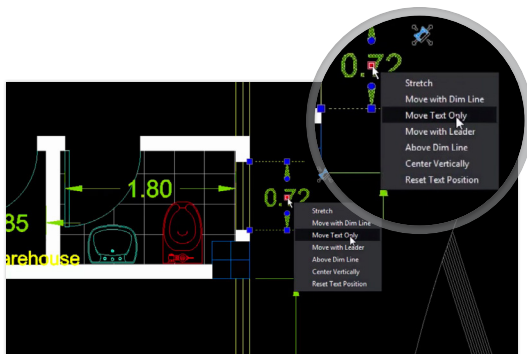
Customer portal to manage licenses and devices

Use your license on any computer and enjoy maximum flexibility

The new Customer Portal facilitates the management of your licenses and subscriptions. You can also use your license to work from any computer. Indeed the same user can activate his license on up to two computers simultaneously and log out at any time to use his license on other computers.

>> See the video on our website

3



Multifunctional Grips

Quick editing options appear when you fly over mid and end point grips

Fly over entity grips and you will discover new contextual shortcut menus offering quick editing features that can vary based on the entity type: edit the length or stretch an entity from its end point grip, change the radius of an arc, insert a vertex on a polyline or convert an arc into a polyline.

>> See the video on our website



ARES®, ARES® Commander, and SiteMaster™ are trademarks or registered trademarks of Graebert GmbH. All other trademarks and registered trademarks are property of their respective owners. Copyright 2016 Graebert GmbH. All rights reserved.

More about the new features on www.graebert.com/arescommander/new



Order Desk +49 (0) 30 896 903 89
sales@graebert.com
Support Desk support@graebert.com

Top NEW features in ARES® Commander 2017

Your competitive advantage for CAD


4



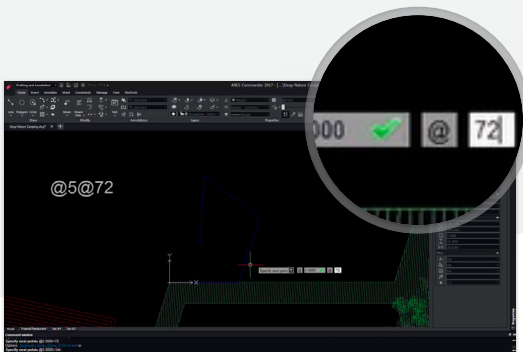
Polylines Editing Improvements

Add vertex to midpoint, convert a segment to an arc or line and more

New options in the command EDITPOLYLINE offer an increased productivity in the edition of polylines. You may convert an arc segment into a line and viceversa, you may also add a vertex to the midpoint of a segment and change its position. Other new options include Taper and Reverse.

>> See the video on our website 


5



Relative Angles in Coordinate Input

Use the "@" prefix to enter the angle from the last given segment

You can now use the "@" prefix to enter relative angles just like you are already used to for relative distances. This unique ability simplifies significantly the coordinate input when you draw successive lines or polyline segments.

>> See the video on our website 


6



Trim and PowerTrim in Hatches and Gradients

Unrivalled flexibility to edit the shape of your hatches and gradients

You can now trim hatches and gradients with the TRIM and POWERTRIM commands. It's never been easier to edit the shape of the areas containing hatches and gradients. Divided hatches and gradients maintain associativity and remain as one entity.

>> See the video on our website 



ARES®, ARES® Commander, and SiteMaster™ are trademarks or registered trademarks of Graebert GmbH. All other trademarks and registered trademarks are property of their respective owners. Copyright 2016 Graebert GmbH. All rights reserved.

More about the new features on www.graebert.com/arescommander/new

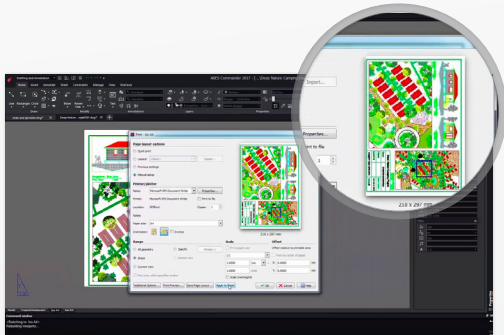


Order Desk +49 (0) 30 896 903 89
sales@graebert.com
Support Desk support@graebert.com

Top NEW features in **ARES® Commander 2017**

Your competitive advantage for CAD


7



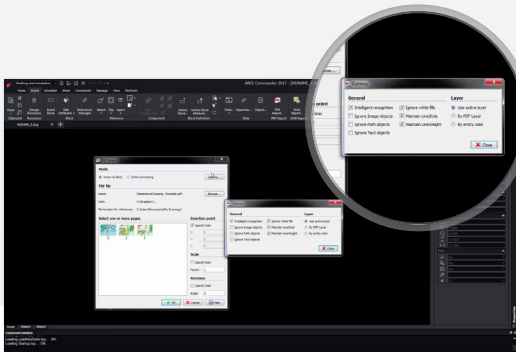
Dynamic Print Preview

The Print settings dialog has been redesigned to improve productivity

Enjoy a reorganized dialog for Print settings with a dynamic preview representing your drawing as it would be printed. You no longer need to switch between settings and preview to adjust your print configuration.

>> See the video on our website 


8



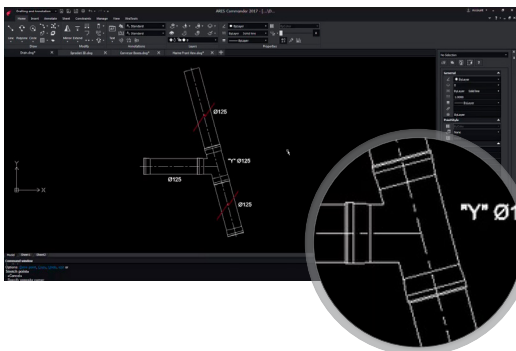
Advanced PDF to DWG conversion

New features allow to recover more information from the PDF

Besides converting or batch-processing your PDF files into DWG files, ARES Commander now not only offers the option to recover the layers organization and names but also to maintain the LineStyle and LineWeight of entities.

>> See the video on our website 


9



Insert Center Lines

Insert Centerlines between pairs of lines, concentric arc and polyline segments

Very popular for Mechanical design but also very helpful in other situations, the CENTERLINE command will draw a line at equidistance of the pair of entities you selected. The CENTER linestyle will be assigned by default and you can fine tune the extension of the Centerline.

>> See the video on our website 



ARES®, ARES® Commander, and SiteMaster™ are trademarks or registered trademarks of Graebert GmbH. All other trademarks and registered trademarks are property of their respective owners. Copyright 2016 Graebert GmbH. All rights reserved.

More about the new features on www.graebert.com/arescommander/new



Order Desk +49 (0) 30 896 903 89
sales@graebert.com

Support Desk support@graebert.com

Top NEW features in **ARES® Commander 2017**


Your competitive advantage for CAD

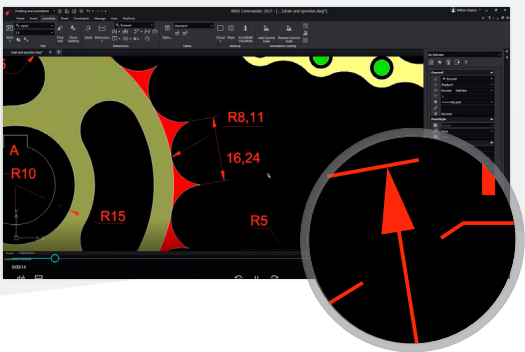


Pattern Along Any Path

Copy entities along a path defined by another entity

Array multiple copies of a chosen entity along a line, polyline, arc, circle, ellipse or spline. Different options not only let you define the distance and total number of insertions but also how to align each insertion with the chosen path.


>> See the video on our website 

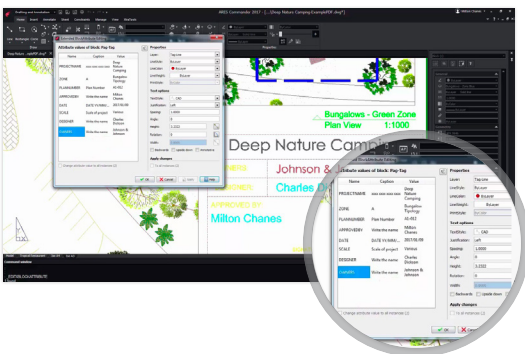


Split Dimension Lines

Split Dimension lines and extension lines to avoid any overlap

Improve the readability of your annotations. When a dimension line or an extension line is overlapping another entity, the command SPLITDIMENSION will help you split them with a default or manual distance without breaking the associativity.


>> See the video on our website 



Advanced Block Attributes Editing

New dialog for advanced editing of block attributes and properties

Select one or more block insertions and use the new dialog to edit one or more attributes and also use it to block properties such as layer, linestyle, color, text style and more.

>> See the video on our website 



ARES®, ARES® Commander, and SiteMaster™ are trademarks or registered trademarks of Gräbert GmbH. All other trademarks and registered trademarks are property of their respective owners. Copyright 2016 Gräbert GmbH. All rights reserved.

More about the new features on www.graebert.com/arescommander/new



Order Desk

+49 (0) 30 896 903 89
sales@graebert.com

Support Desk

support@graebert.com