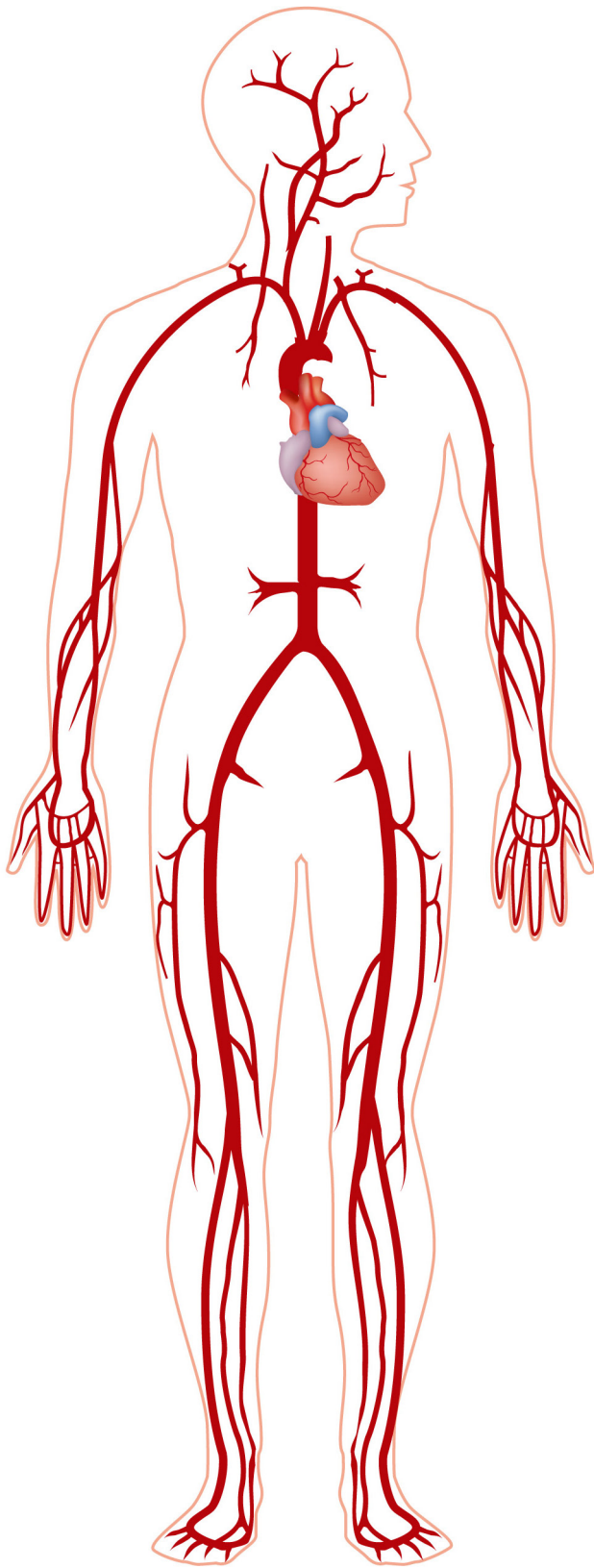


DURING THE PROCEDURE



Information

- Your procedure will last 1-2 hours and will take place in the Cath Lab. Your family may wait in the Cath Lab Waiting Room.
- A patient representative will be available for your family to answer questions and help with their needs.
- The cardiologist will meet with you and your family following the procedure to review the results.

Activity

- A nurse will prepare the patch of skin where the catheter will be inserted.
- An IV line will be placed and medication will be given to keep you relaxed and comfortable.
- You'll be moved to the Cath Lab. The room may feel cool, but you will be covered with sterile drapes.
- You will be relaxed but awake during the procedure because you may be asked to breathe deep or cough.
- The doctor will numb the area where the catheter will be inserted. This usually feels like a pinprick with some burning, but it should only last a few seconds.
- Your doctor will insert a sheath (short plastic sleeve) into a blood vessel. You'll feel some pressure at first. The catheter will be put into the sheath and threaded to your heart.
- The doctor will inject contrast dye through the catheter. You may feel a warm sensation for a few seconds. X-rays will be used to show the contrast dye on the screen.
- The catheter will be withdrawn and the sheath will be removed. The site may be closed with a stitch or closure device.

AFTER THE PROCEDURE

Activity

- You will be moved to a recovery unit, where you may be asked to lie flat for 4-8 hours.
- The insertion site may be held under pressure to prevent bleeding.
- The nurse will assist you the first time you get up after the procedure.
- You may be required to spend the night in the hospital based upon your condition.

When You Get Home

- Watch for swelling or bleeding during the first 48 hours. The site will be bruised, but this should go away in a week or so.
- Avoid bending, squatting or any intense activity, such as climbing stairs, running or lifting anything over 15 pounds.
- Care for the puncture site by avoiding baths, hot tubs or swimming pools for the first seven days after the procedure or until the wound has closed.
- You may remove the dressing and shower after 24 hours, gently washing the site. Ask your doctor for directions if the site was sealed with a special closure device. In some cases, you may need to remove a dressing or pad.
- Your physical condition and the nature of your job will determine when you can return to work. Check with your doctor.

When to Call your Provider

- If the arm or leg feels cold or numb.
- If there is worsening pain, redness or swelling at the insertion site.
- You have a fever over 100 degrees fahrenheit
- If the insertion site bleeds:
 - Lie flat and apply firm pressure.
 - Call 911.

